

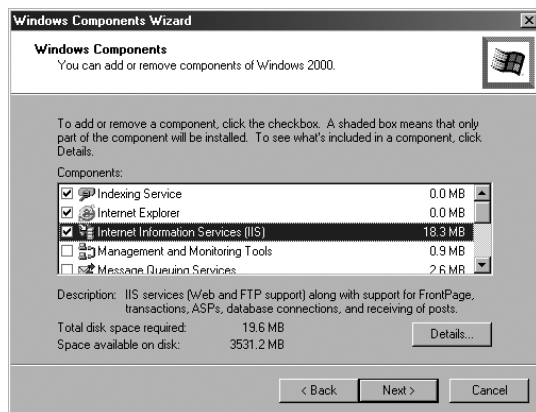
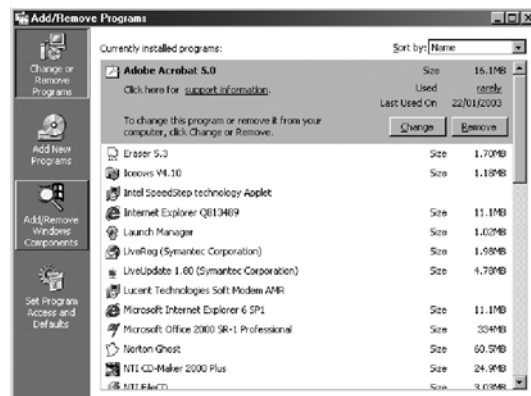
Technical instructions for consultants

There are many web-servers freely available on the Internet. Microsoft operating systems from Windows 98 onwards come with a web-server. To install on a Windows 2000 computer:

Select **Add/Remove Programs** from the Control Panel.

Select **Add/Remove Windows Components** from the menu on the left.

Finally, choose to display all records together.



Select **Internet Information Server (IIS)** and click **Next**.

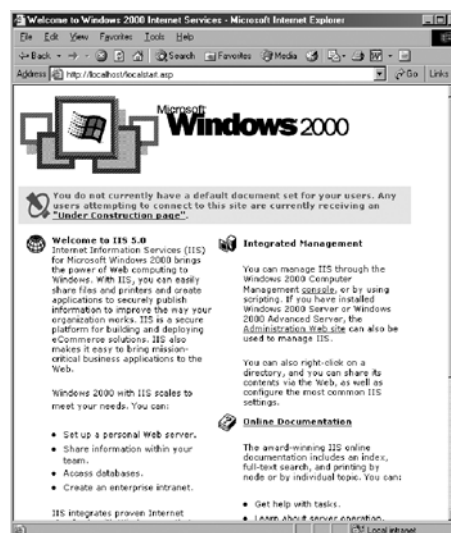
The web-server will install.

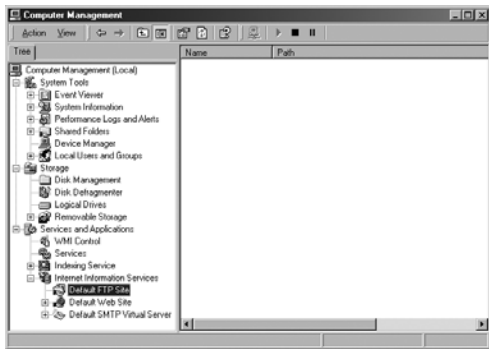
During installation a folder will be created at C:\inetpub that contains a number of files required for the server to function. A subfolder, wwwroot, contains the files that will be published by the server.

The web-server may be accessed from a web-browser on the same computer by using a special name, *localhost*.

Entering the address **http://localhost/** will access the default page. It is highly recommended that this information is read and referred to at appropriate points.

The web-server is controlled from the IIS snap-in. If you wish other users to access your site you should ensure that the permissions are correctly set. This will vary depending on the network software you are using.





To launch the Internet Information Services snap-in

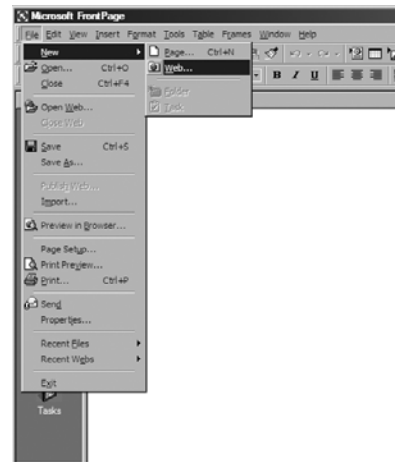
Click **Start**, point to **Settings**, click **Control Panel**.

Double-click **Administrative Tools** and then double-click **Computer Management**.

Under the **Service and Applications** node, expand **Internet Information Services**.

Microsoft FrontPage integrates many of its functions with IIS allowing a range of programs to be run on the server. For these services to function correctly, each user will require a separate home web.

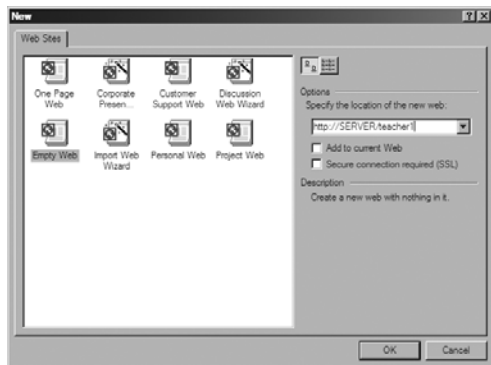
To create new web folders, run FrontPage and select **New, Web...** from the **File** menu.



Select **Empty Web** from the range of options.

Ensure that you enter the correct web address for your network before clicking **OK**.

Create as many webs as required.



When using FrontPage, users should open the appropriate web. It contains two folders by default: 'Images', into which pictures should be collected and 'Private', that is used to contain files accessible only from the file system and not from the Internet.

