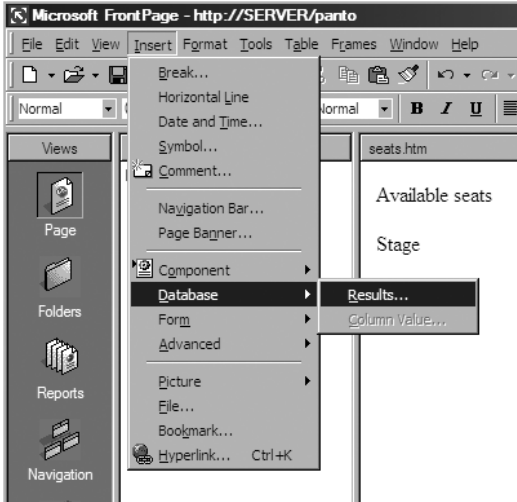
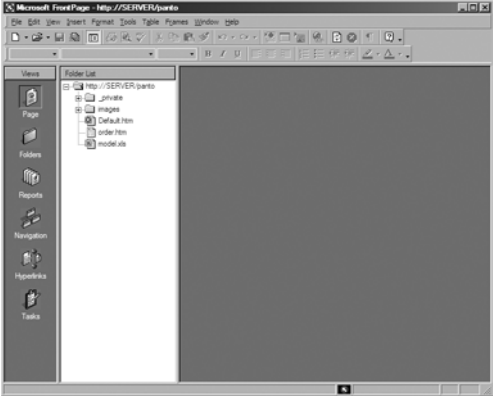


# Incorporating database content into a web page

Run Microsoft FrontPage 2000. Open a web from the **File, Open, Web** menu.

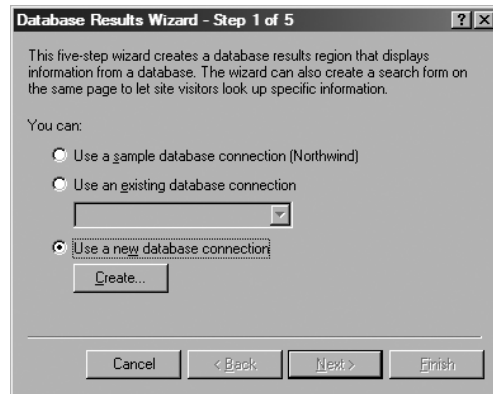
It is easier to embed content from a database in a web page if the database is stored within the web you are using. To do this, select **Import** from the **File** menu. Browse to find the relevant file and click **OK**. The file will be imported into the web. Database files can be in a wide variety of formats. In this example it is a Microsoft Excel spreadsheet, **model.xls**. This is similar to a file in *Year 9 Case study 9.3* that is used to indicate seats that are sold. As this file is filled in with sold seats, the information is made available on the web page.

The file must be prepared first. Check, for example, that the first row in the spreadsheet contains field names. FrontPage takes the data from a named range of cells in Excel. The first row is always assumed to contain field names.

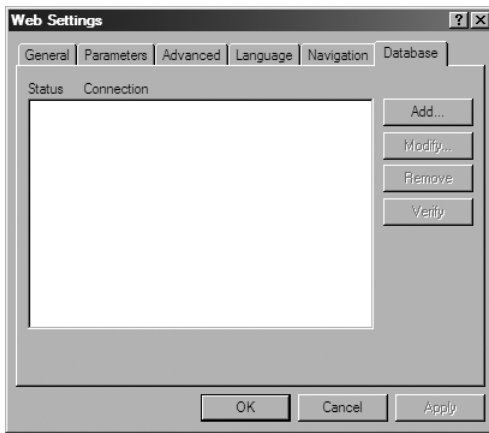


Create a new page. Add required text.  
To add data from the database, from the **Insert** menu select **Database, Results**.

The Database Results Wizard will guide you through the process. If this is the first time you have used this database you will need to set up a database connection. Select **Use a new database connection** and click **Create**.

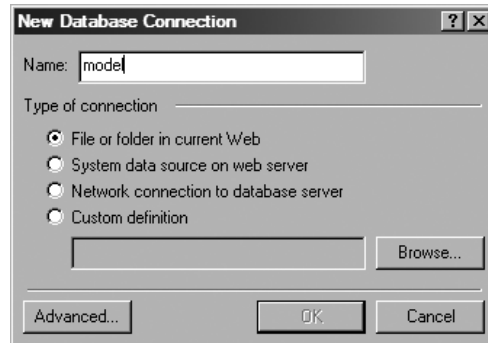


Select **Add**.



Enter a name for the database connection and select the type of connection.

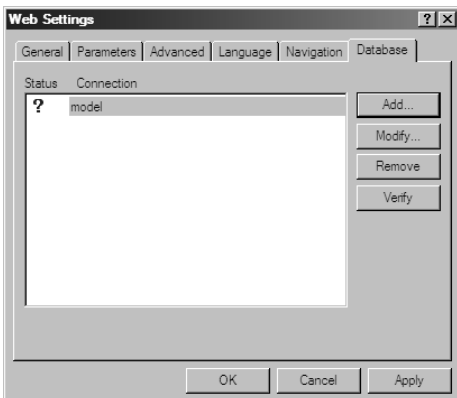
Browse to the required file, ensuring that you select the appropriate file type from the drop-down menu.



The connection will appear.

Click on **Verify** to ensure that the connection works. There may be some delay as extra files are created and added to your web.

If the connection is fine, a tick will appear next to it. Click on **Apply**.

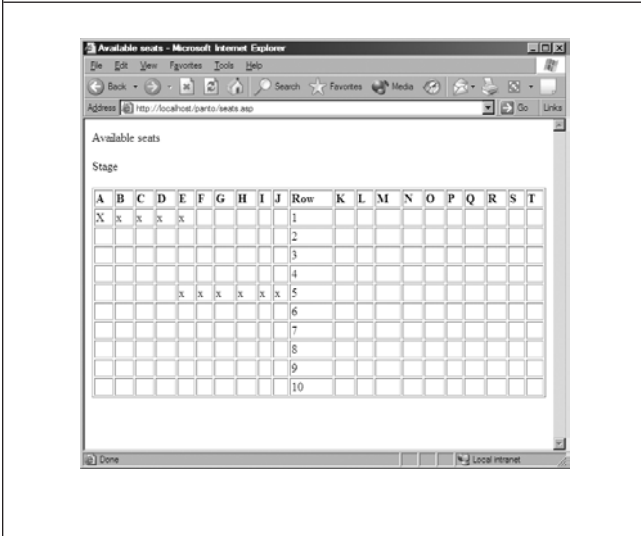
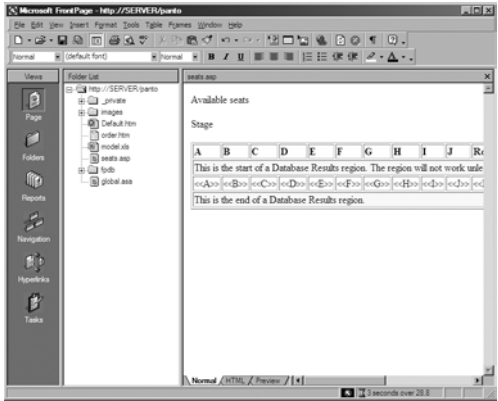




The finished page will appear with sections marked but no data.

This is because the data only appear in the page when the program is run on the server. To see this you must run the page from the server in a browser.

You can format the table and the data using style sheets.



When the file is saved you will see that the file extension is not htm but asp. This file extension indicates that the server should run scripts when it is called.

Because the page is generated by the server every time it is called, the data are always up to date. Note, however, that the data will not be updated if the Excel spreadsheet is open.

To enable data to be updated you must share the workbook. In Excel, from the **Tools** menu select **Share Workbook** and edit the properties as required.

You might like to compare this method of embedding data with the technique used in the *Amstead Garden Centre* website. Here the data is displayed using coding that runs in the browser rather than on the server. This has the advantage of being quicker to display because the browser does not have to make repeat requests to the server for updates. However, this script is not standard and only runs on Microsoft Internet Explorer 4.01 and later.

You might like to use the data to create a web page catalogue that is accessible to all browsers.

# Model.xls, an example database in Microsoft Excel format

## Finance solution 3

### Drama production seat booking sheet

(assuming 80% of tickets sold - random number of adults/concessions)

A	B	C	D	E	F	G	H	I	J	Row	K	L	M	N	O	P	Q	R	S	T
p	p	c	p	c	p	c	p	p	p	1	c	c	a	p	c	a				a
a	a	a	a	a	c	c	c	c	c	2	p	a	c	c	c	a				p
c	a	a	c	a	p	a	c	p	a	3	a					p				c
c	p				c	c	c	c	a	4	a					c				
c	c				c	c	a	c	p	5	a			p		p	p			
c	a				p	c	a	c	c	6	c	a	c	a	a	p				
c	a	p	p	c	p	p	c	p	c	7	c	c	c	c	a	c				
a	c	p	c	c	a	c	p	c	c	8	p	c	c	c	c	a	a	a		
a	c	a	p	p	c	c	c	p	c	9	c	p	c	p	c	c				c
a	a	p	p	p	p	p	a	a	a	10	a	c	c	a	a	p				p
c	p	c	p	c	p	a	a	p	c	11	c	p	p	c	p	c				

The named range auditorium includes the row headers and includes B6:V17

Number of adult seats sold 44  
 Number of concession seats sold 75  
 Number of pensioner seats sold 48

Cost of adult seats £3.50 Total seats sold 167  
 Cost of concession seats £2.00 Total seats unsold 53  
 Cost of pensioner seats £1.50  
 Total money taken £376.00

Overall Profit £41.00

Click on Finance at the bottom of the screen to see the financial spreadsheet.

For more details, see Case study 9.3 from the training unit Progression into and through Year 9

### Drama production financial planning sheet

#### Income

Ticket sales £376.00  
 Refreshments £25.00  
 TOTAL £401.00

#### Expenditure

Caretaker £30.00  
 Props £50.00  
 Costumes £100.00  
 Refreshments £30.00  
 Royalties £150.00  
 TOTAL £360.00

Balance(profit/loss) £41.00