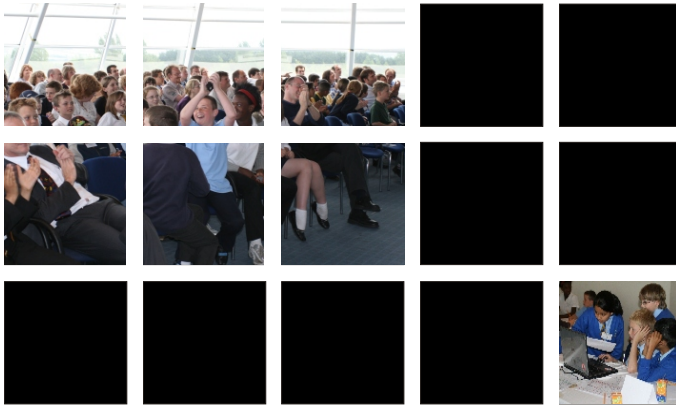




STEMNET



We are now in our ninth season and the Challenge continues to gain in popularity year on year. It has consistently grown in stature in both Primary and Secondary schools throughout the U.K. and is now recognised as being one of the most engaging projects of its kind. Literally thousands of students are enjoying mathematics as a result, some for the very first time in their lives!

Harnessing the excitement and expectation of a Grand Prix race, the Challenge enables participating schools to involve students at most ability levels. It will encourage them to discover what fun a basic knowledge and understanding of mathematics can be, not to mention an asset for life!

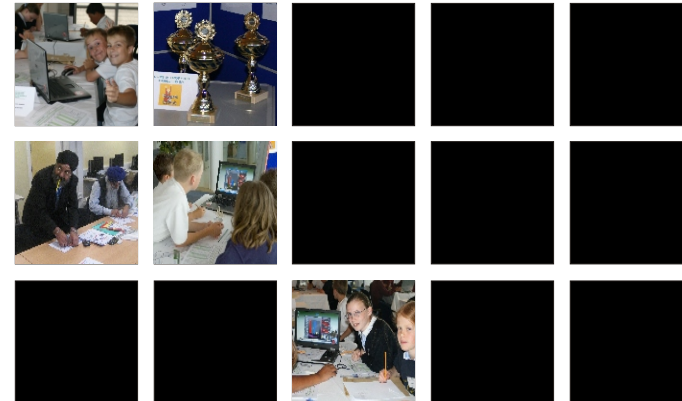
We hope you will want to join in the fun too and help us all raise standards in mathematics!

For further information, please contact:

Brian Richardson
National Organiser
Jaguar Cars Maths in Motion Challenge for Schools
CSH Education
P.O. Box 163, Huntingdon
Cambridgeshire, PE28 3UR

Tel: 01487 741223 Fax: 01487 741213
email: info@mathschallenge.org.uk
www.mathschallenge.org.uk

THE JAGUAR CARS MATHS IN MOTION CHALLENGE FOR SCHOOLS



Primary Edition
2009/10

Motivation

Basic Skills

Transition
Years

Teamwork

3 Age Ranges

Functional
Maths

Raises
Achievement

Real Life
Maths



What is the Challenge about?

Using a computer simulation based on the real Grand Prix circuits, students, aged 9 to 16, have to work together in small teams, trying to set up 'virtual' racing cars to win a race. They use basic mathematics and a whole lot more besides! The Challenge is to get through the regional heats and reach the National Finals - and to raise achievement levels in mathematics along the way!

Who can take part?

All U.K. primary and secondary schools are eligible to take part. We have Challenges for three age ranges (all as at 30th September 2009):-

Age Range 1: Any pupil of Primary School age (exc P7)

Age Range 2: Any pupil in years 7, 8 and 9 & P7,S1/S2

Age Range 3: Any pupil in years 10 and 11, S3/S4

OUR 2008 WINNERS



St. Joseph's RC Primary School
Primary Champions



Tunbridge Wells GS for Boys
KS3, P7, S1/S2
Champions



Phillips High School
KS4 -S3/4 Champions &
Overall Winners

There is a list of the schools that have already registered to take part on our website if you are interested in some local rivalry! It reached just under 1,000 in 2008!

What Maths is covered?

There is an extensive document on our website for KS2, 3 and 4, Primary 7, S1 and 2. Boys and girls are given the opportunity to develop and reinforce their basic skills in mathematics, over a range of levels, and will, at least, need to use long division, long multiplication scale, percentages, the measuring of angles with protractors, ratio, conversion, maths modelling and strategy! All this takes place within a competitive and fun environment that will engage most primary school aged pupils.

There are many opportunities for cross curricular work including Science, and English, within the maths based topic.

How does it all work?

Teachers have used the Challenge as a maths based class project, to engage disaffected pupils, to put some fun into a Maths Club, to stretch G & T pupils and a whole lot more (see Case Studies on the website). Often, primary schools participate through a Lead Centre but under the rules of the Challenge, any school can take part in its own right. After all, the idea is to help raise standards in mathematics across the board!

The Challenge is run through a series of 'races' being held in each school throughout the year to find the school's own 'Champions'. This leads to regional based Finals between the winning teams from each school (there is a list of participating schools on the website if you fancy some local rivalry as well!). The regional winners then enter a knockout round to determine which schools take part in the National Final.

School Champions March 2010 → LEA Winners Announced March 2010 → LEA Winners Knockout May 2010 → Finalists Announced May 2010 → National Final June 2010

There will also be Summer and Christmas 'Fun' races.

Is training available?

Although training is not necessary for you to take part in the Challenge, many teacher training days are being run during 2009/10 for those who want it. The venues and dates will be on our website. If you would prefer to run a course in your own school for your staff and/or your students, this can be arranged - please call us on 01487 741223 for details.

Our training days are very popular, as you will see from the evaluations we publish on the website, so we do advise you to book as early as possible.

What software do we need? How much is it?

As a participating school, you will be entitled to purchase the software at a Challenge discounted price, as per the enclosed Order Form. Once you have completed the Order Form you can either fax it back to us or post it to us, with your Official Purchase Order. We will send you your copy of the software, with an invoice, through the post.

If the Order Form has been misplaced, please email us and we will send you a copy of it as soon as possible.