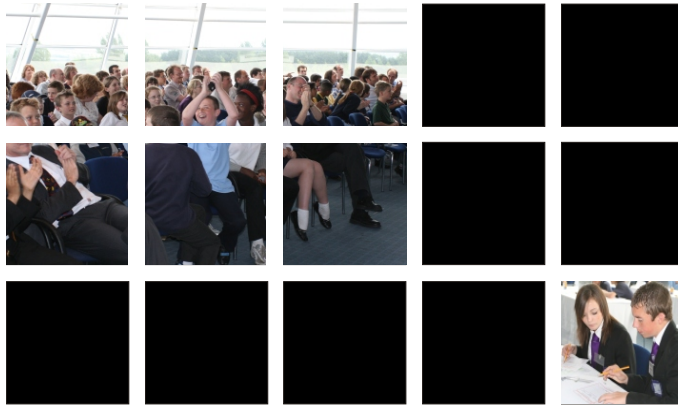




STEMNET



We are now in our ninth season and the Challenge continues to gain in popularity year on year. It has consistently grown in stature in both Primary and Secondary schools throughout the U.K. and is now recognised as being one of the most engaging projects of its kind. Literally thousands of students are enjoying mathematics as a result, some for the very first time in their lives!

Harnessing the excitement and expectation of a Grand Prix race, the Challenge enables participating schools to involve students at most ability levels. It will encourage them to discover what fun a basic knowledge and understanding of mathematics can be, not to mention an asset for life!

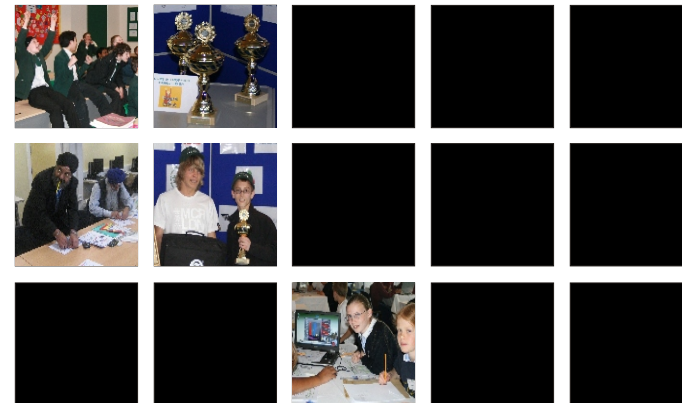
We hope you will want to join in the fun too and help us all raise standards in mathematics!

For further information, please contact:

**Brian Richardson**  
**National Organiser**  
**Jaguar Cars Maths in Motion Challenge for Schools**  
**CSH Education**  
**P.O. Box 163, Huntingdon**  
**Cambridgeshire, PE28 3UR**

Tel: 01487 741223 Fax: 01487 741213  
email: [info@mathschallenge.org.uk](mailto:info@mathschallenge.org.uk)  
[www.mathschallenge.org.uk](http://www.mathschallenge.org.uk)

## THE JAGUAR CARS MATHS IN MOTION CHALLENGE FOR SCHOOLS



**Secondary Edition**  
**2009/10**

Motivation

Basic Skills

Transition  
Years

Teamwork

3 Age Ranges

Functional  
Maths

Raises  
Achievement

Real Life  
Maths



## What is the Challenge about?

Using a computer simulation based on the real Grand Prix circuits, students, aged 9 to 16, have to work together in small teams, trying to set up 'virtual' racing cars to win a race. They use basic mathematics and a whole lot more besides! The Challenge is to get through the regional heats and reach the National Finals - and to raise achievement levels in mathematics along the way!

## Who can take part?

All U.K. primary and secondary schools are eligible to take part. We have Challenges for three age ranges (all as at 30th September 2009):-

**Age Range 1: Any pupil of Primary School age (exc P7)**

**Age Range 2: Any pupil in years 7, 8 and 9 & P7,S1/S2**

**Age Range 3: Any pupil in years 10 and 11, S3/S4**

## OUR 2008 WINNERS



St. Joseph's RC Primary School  
Primary Champions



Tunbridge Wells GS for Boys  
KS3, P7, S1/S2  
Champions



Phillips High School  
KS4 -S3/4 Champions &  
Overall Winners

There is a list of the schools that have already registered to take part on our website if you are interested in some local rivalry! It reached just under 1,000 in 2008!

## What Maths is covered?

There is an extensive document on our website for KS2, 3 and 4, Primary 7, S1 and 2. Boys and girls are given the opportunity to develop and reinforce their basic skills in mathematics, over a range of levels, and will, at least, need to use long division, long multiplication scale, percentages, the measuring of angles with protractors, ratio, conversion, maths modelling and strategy! All this takes place within a competitive and fun environment. Although never used for the Challenge itself, the software includes optional sections on volume, simultaneous equations, density, trigonometry, cumulative frequency graphs and estimation.

There are many opportunities for cross curricular work including Science, and English, within the maths based topic.

## How does it all work?

The Challenge is run through a series of knockout races, held throughout the year via email, to see who takes part in the National Final in June 2010. A Secondary School or Academy can either take part on its own or as a Challenge Lead Centre. A Lead Centre undertakes to purchase the required software for itself and at least two of its partner/feeder schools, and to act as the link between ourselves and those schools. Many schools have used the Challenge as the basis of a transition years project, to engage disaffected students and to stimulate those who are Gifted and Talented.

In return for taking on the role of a Lead Centre, the software will be supplied at an even greater discount. Please refer to the note at the top of the Order Form if you do not want to involve your partner schools and enter on your own.

School Champions March 2010    LEA Winners Announced March 2010    LEA Winners Knockout May 2010    Finalists Announced May 2010    National Final June 2010

There will also be Summer and Christmas 'Fun' races.

## Is training available?

Although training is not necessary for you to take part in the Challenge, many teacher training days are being run during 2009/10 for those who want it. The venues and dates will be on our website. If you would prefer to run a course in your own school for your staff and/or your students, this can be arranged - please call us on 01487 741223 for details.

Our training days are very popular, as you will see from the evaluations we publish on the website, so we do advise you to book as early as possible.

## What software do we need? How much is it?

As you will see from the Order Form, if you enter the Challenge on your own, a Secondary School network licence can be purchased at the subsidised price of £349.

If you want to become a Lead Centre, you need to order a network licence of the software for yourself at £275 plus whatever versions your partner schools need i.e. Secondary or Primary Network etc..

For example, a Lead Centre working with two Primary schools will need to order 1 x Secondary licence plus 2 x Primary licences at a cost of £673 ( 1 @ £275 + 2 @ £199). Once you have decided, simply complete the Order Form and either fax it to us, or post it to us, together with your Official Purchase Order.